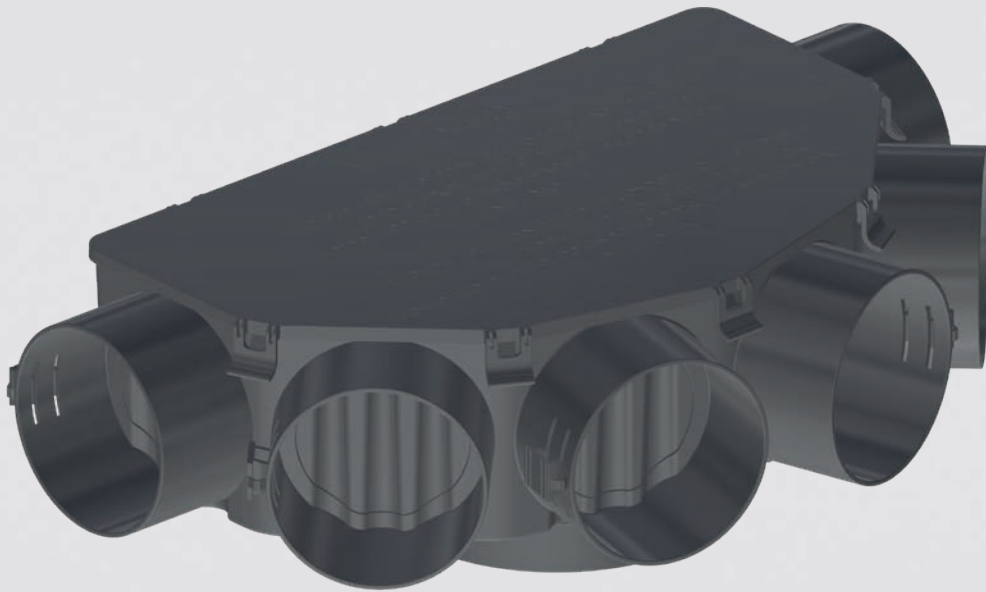


# PICHLER KS AIR DISTRIBUTION SYSTEM



**COMFORT  
VENTILATION**



 **PICHLER**

*Systematic ventilation.*

## Product description

The hygiene-certified air duct range KomFlex® with a round or oval cross section is enhanced by a newly developed plastics distribution system (KS system) from PICHLER, featuring secondary vents and formwork rings as well as distribution boxes:



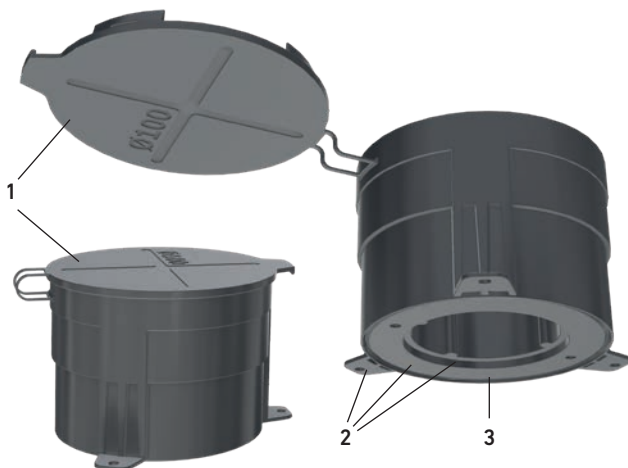
- Offering a unique, easy and extremely convenient use
- Providing various mounting options, whether to be used in bricks, concrete, wood or drywall constructions
- Available in two sizes: Ø 100 mm / Ø 125 mm
- Made of food-safe plastic, tested according to EN ISO 846
- The design meets the hygienic requirements of VDI 6022
- Fire behaviour Class E according to EN 13501-1

### Overall height

|                                      |        |   |
|--------------------------------------|--------|---|
| KS formwork ring                     | 80 mm  | Implementable element ceiling up to 80 mm           |
| KS secondary vent                    | 95 mm  | Implementable wall thickness from 100 mm onwards    |
| KS secondary vent + KS formwork ring | 135 mm | Implementable ceiling thickness from 150 mm onwards |

## Components – KS formwork ring

The formwork ring is a basic component for use of the KS system in concrete. It can be fastened to concrete formwork elements in various ways, offers connection options for the secondary vent and valves as well as distribution boxes and is provided with covers on both sides, preventing the ingress of concrete or dirt. It is ideally suited for the installation into ceilings and walls of ready-mixed concrete. Furthermore, it allows for easy use in in-situ concrete.



1 Integrated dirt cover, with positioning cross

2 Variable fastening options:

- Tool magnet holder (KAISER)
- Adhesive surface
- External brackets(in-situ concrete)

3 Well-thought-out design:

- Bottom cover can be broken out easily

- The flat dirt cover on the top is provided with a positioning cross for the use with laser positioning systems. The cover can be opened up easily to connect the secondary vent.
- The cover on the bottom side contains a tool magnet holder (KAISER). After the concreting process, it can be easily broken out.

### Overall height

|                                      |        |   |
|--------------------------------------|--------|---|
| KS formwork ring                     | 80 mm  | Implementable element ceiling up to 80 mm           |
| KS secondary vent + KS formwork ring | 135 mm | Implementable ceiling thickness from 150 mm onwards |

| Item  | Article number |
|---|----------------|
| KS formwork ring 100<br>Air connections: 1x Ø 100 MF, 1x Ø 100 for 08KSN100175<br>Dimensions D x H: Ø 138 x 80 mm, weight: approx. 0.1 kg | 08KSR100       |
| KS formwork ring 125<br>Air connections: 1x Ø 125 MF, 1x Ø 125 for 08KSN1250V<br>Dimensions D x H: Ø 163 x 80 mm, weight: approx. 0.13 kg | 08KSR125       |

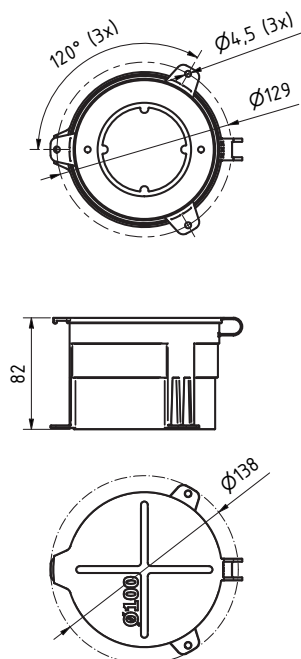


After pouring concrete, only a closing edge is visible. No post-treatment required.

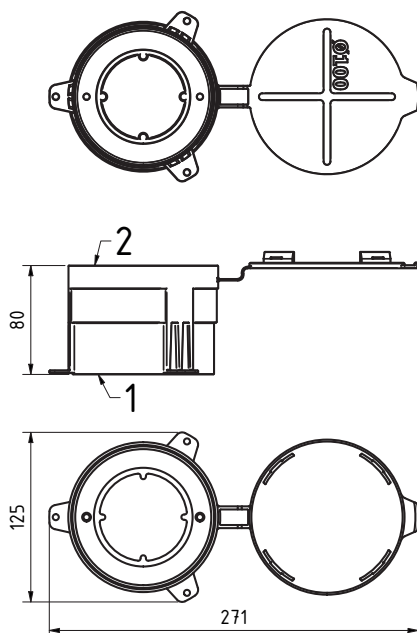


# KS FORMWORK RING Ø 100

Cover closed



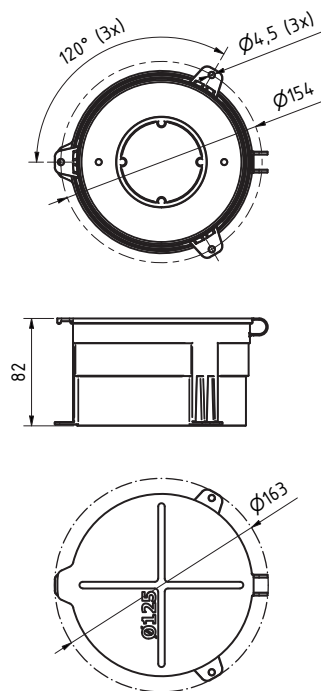
Cover open



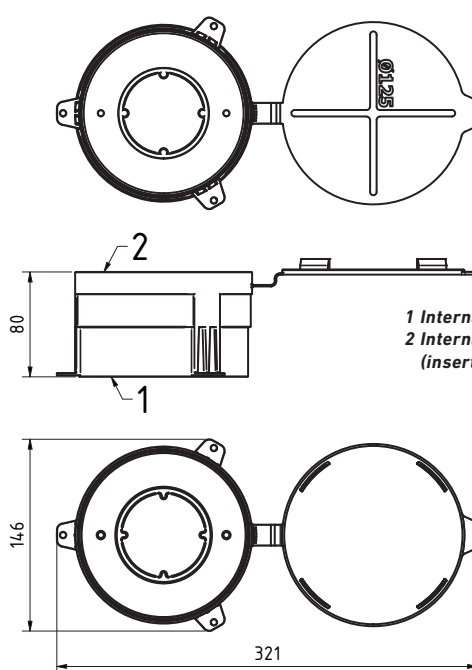
1 Internal connection: Ø 100 MF  
2 Internal connection: Ø 100 for 08KSN100175  
(insertion depth 40 mm)

# KS FORMWORK RING Ø 125

Cover closed



Cover open



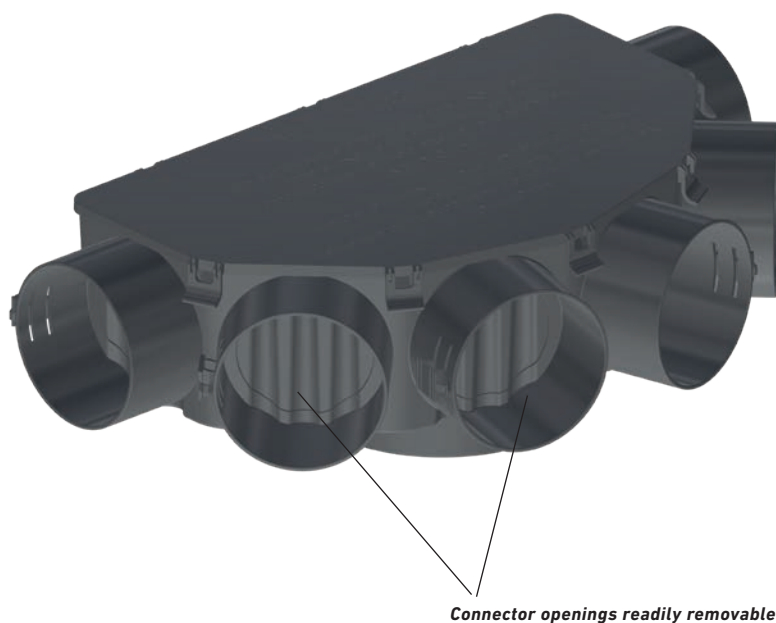
1 Internal connection: Ø 125 MF  
2 Internal connection: Ø 125 for 08KSN1250V  
(insertion depth 40 mm)



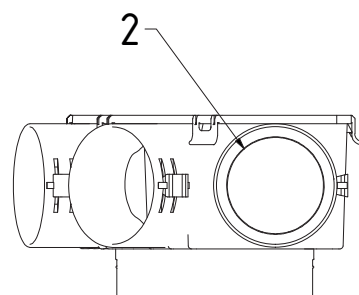
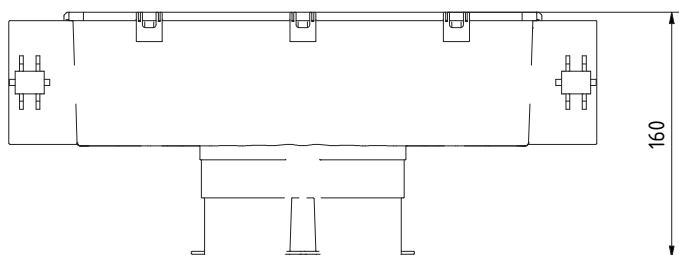
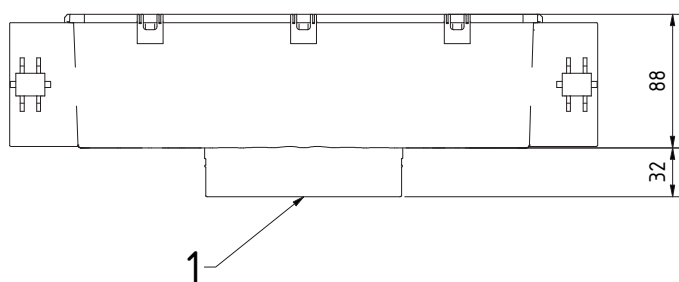
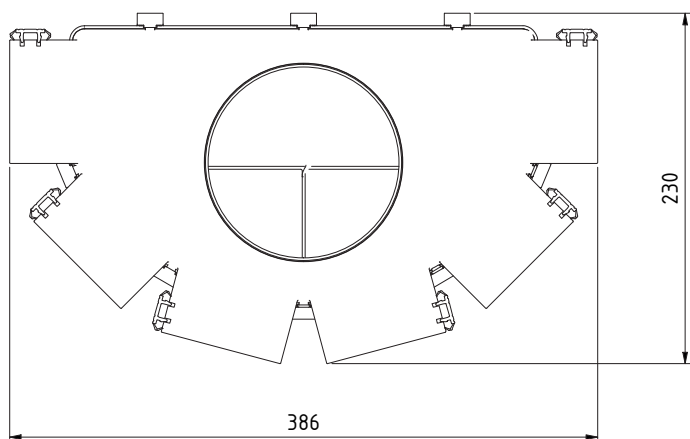
## Components – KS distribution box

The distribution box has a 1x Ø125 mm connector designed to fit a 08KSR125 formwork ring. The flexible KomFlex 75 provides for distribution of the airflow, for the connection of which there are six supports with integrated locking systems.

| Item  | Article No.  |
|---|--------------|
| KS distribution box<br>airflow connectors: 1x Ø125 NP, 6x KomFlex 75<br>Dimensions W x H x L: 386 x 120 x 230 | 08KSVK125675 |



# KS DISTRIBUTION BOX



1 Connector Ø 125 NP  
2 Connectors: 6x KomFlex Ø 75 with locking system

Total height with formwork ring



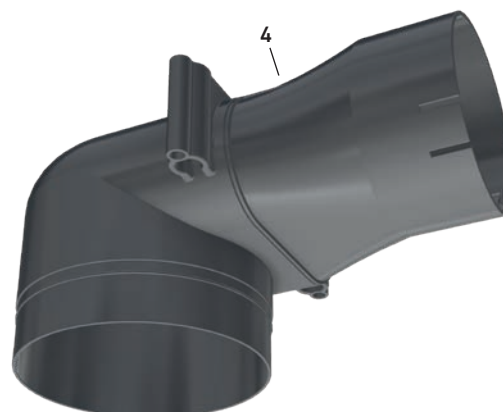
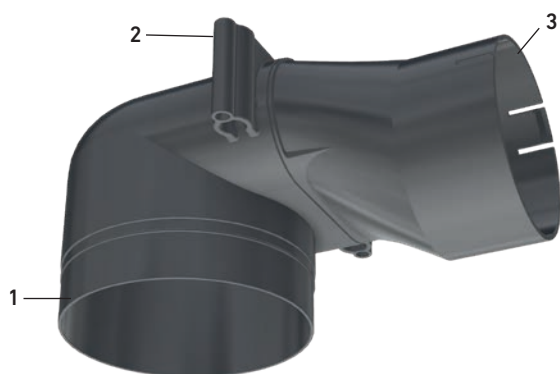
## Components – KS secondary vent

The secondary vent is the connecting piece from the KomFlex air duct system to the supply air or extract air valve.

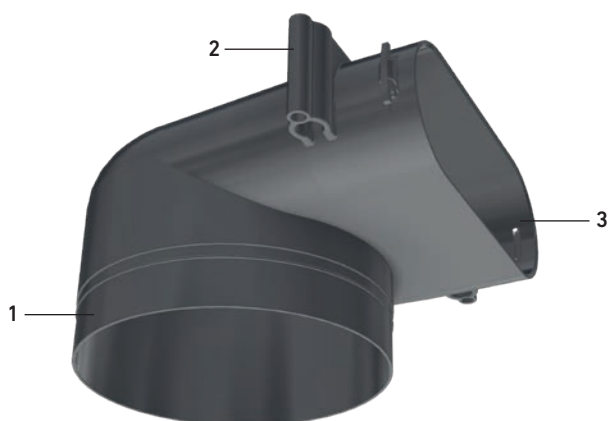
- Various mounting options: brick, wood or drywall construction and in the suspended ceiling
- Optional installation into concrete in combination with the KS formwork ring
- Low overall height of 95 mm (implementable wall thickness from 100 mm onwards)
- Minimum pressure loss thanks to the flow-optimised design. Super quiet.

| Item   | Article number |
|--|----------------|
| KS secondary vent 100<br>Air connections: 1x Ø 75 mm KomFlex®, 1x Ø 100 mm MF<br>Dimensions W x H x L: 139 x 95 x 201 mm,<br>weight: approx. 0.13 kg | 08KSN100175    |
| KS secondary vent 125<br>Air connections: 1x KomFlex® oval, 1x Ø 125 mm MF<br>Dimensions W x H x L: 174 x 95 x 176 mm,<br>weight: approx. 0.12 kg    | 08KSN1250V     |

### KS SECONDARY VENT Ø 100



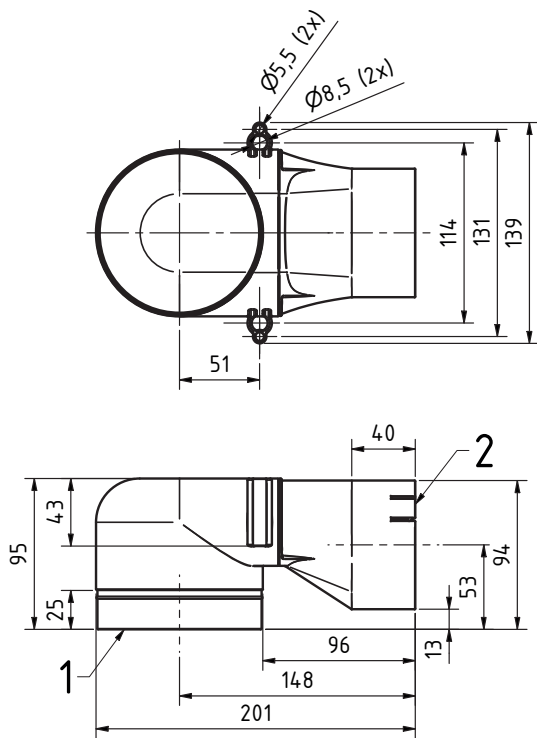
### KS SECONDARY VENT Ø 125



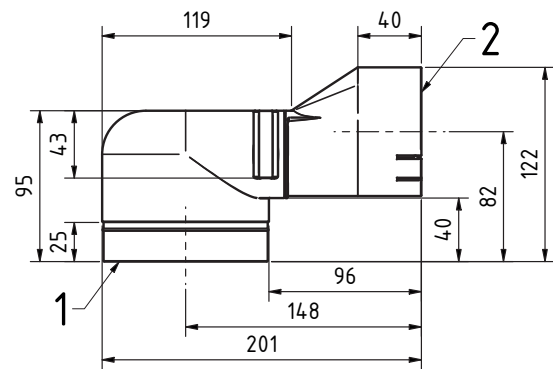
- 1 Tight connection to the KS formwork ring or KS extension element
- 2 Mounting option, suitable for M8 or Ø 5 mm
- 3 KomFlex connection with pull-out protection
- 4 Connection optionally twistable by 180°



# KS SECONDARY VENT Ø 100

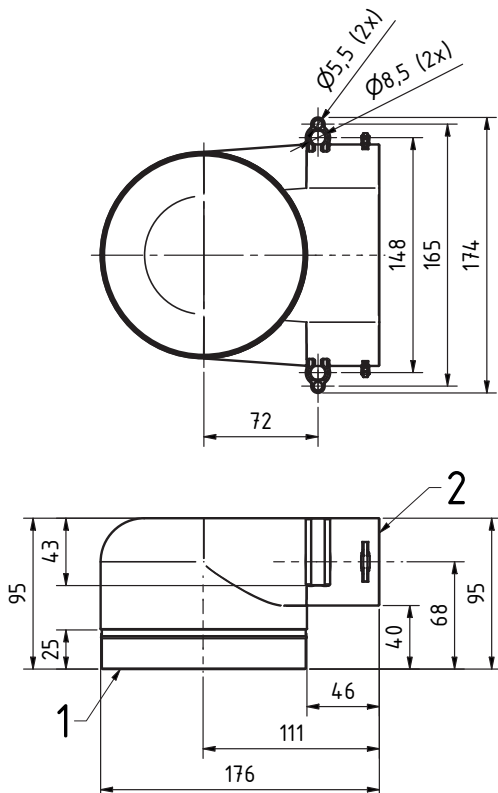


Connection twisted by 180°:



- 1 Internal connection: Ø 100 MF  
External connection: Ø 100 for 08KSR100 (insertion depth 40 mm) or 08KSV100
- 2 Internal connection: KomFlex Ø 75 mm with pull-out protection

# KS SECONDARY VENT Ø 125



- 1 Internal connection: Ø 125 MF  
External connection: Ø 125 for 08KSR125 (insertion depth 40 mm) or 08KSV125
- 2 Internal connection: KomFlex oval with pull-out protection

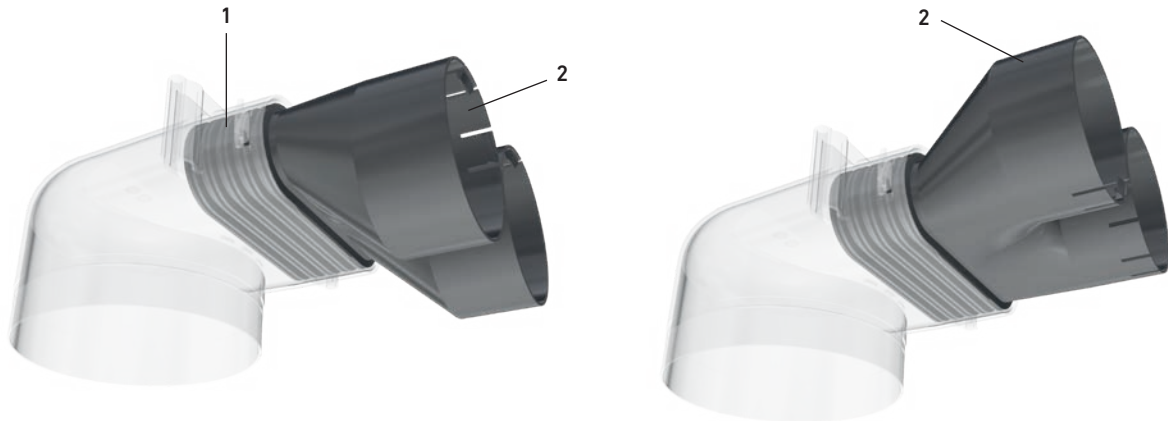


## Components – KS adapter

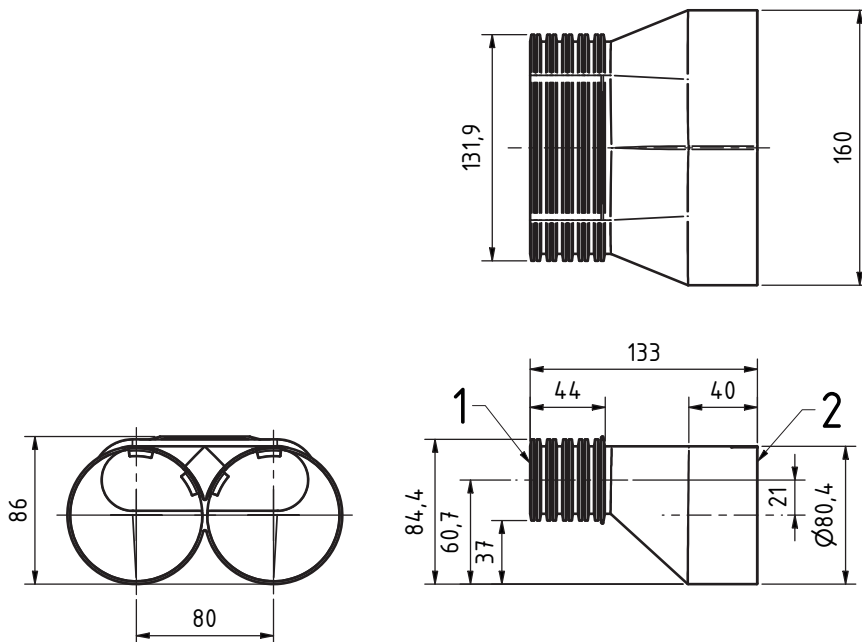
The adapter is used for connecting an oval KomFlex connection to two round KomFlex 75 pipes. It can also be used in combination with the KS secondary vent 125 (08KSN125OV).

- Super quiet and minimum pressure loss thanks to a flow-optimised design

| Item  | Article number |
|---|----------------|
| KS adapter KomFlex<br>Air connections: 1x KomFlex oval, 2x KomFlex 75<br>Dimensions W x H x L: 160 x 86 x 133 mm,<br>weight: approx. 0.1 kg | 08KSAOV275     |



1 KomFlex connection with pull-out protection  
2 Connection optionally twistable by 180°



1 External connection: 1x KomFlex oval  
2 Internal connection: 2x KomFlex Ø 75 mm with pull-out protection





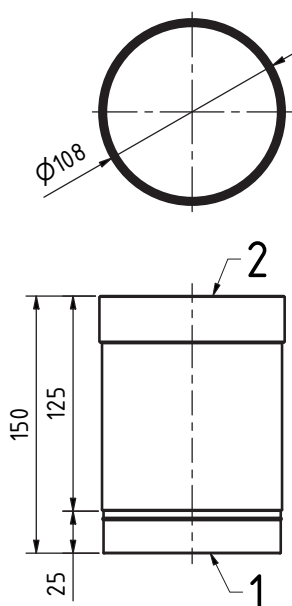
## Components – KS extension element

The extension element is used for bridging variable spaces in suspended ceilings or drywall constructions. The extension element can be used to extend the air duct by up to 125 mm, if required, several extension elements can also be connected in succession.

| Item  | Article number |
|---|----------------|
| KS extension element 100<br>Air connections: 1x Ø 100 MF, 1x Ø 100 for 08KSN100175<br>Dimensions D x L: Ø 108 x 150 mm, weight: approx. 0.09 kg | 08KSV100       |
| KS extension element 125<br>Air connections: 1x Ø 125 MF, 1x Ø 125 for 08KSN1250V<br>Dimensions D x L: Ø 133 x 150 mm, weight: approx. 0.11 kg  | 08KSV125       |

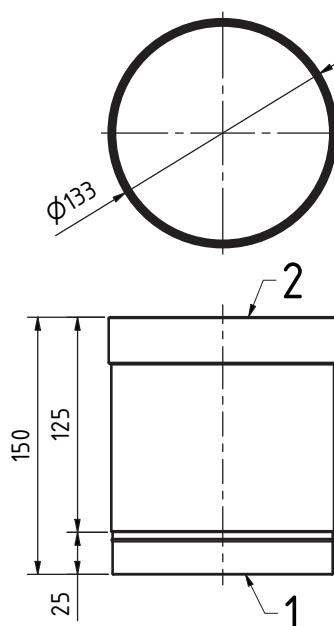


KS EXTENSION ELEMENT Ø 100



1 Internal connection: Ø 100 MF  
External connection: Ø 100 for 08KSV100  
2 Internal connection: Ø 100 for 08KSN100175

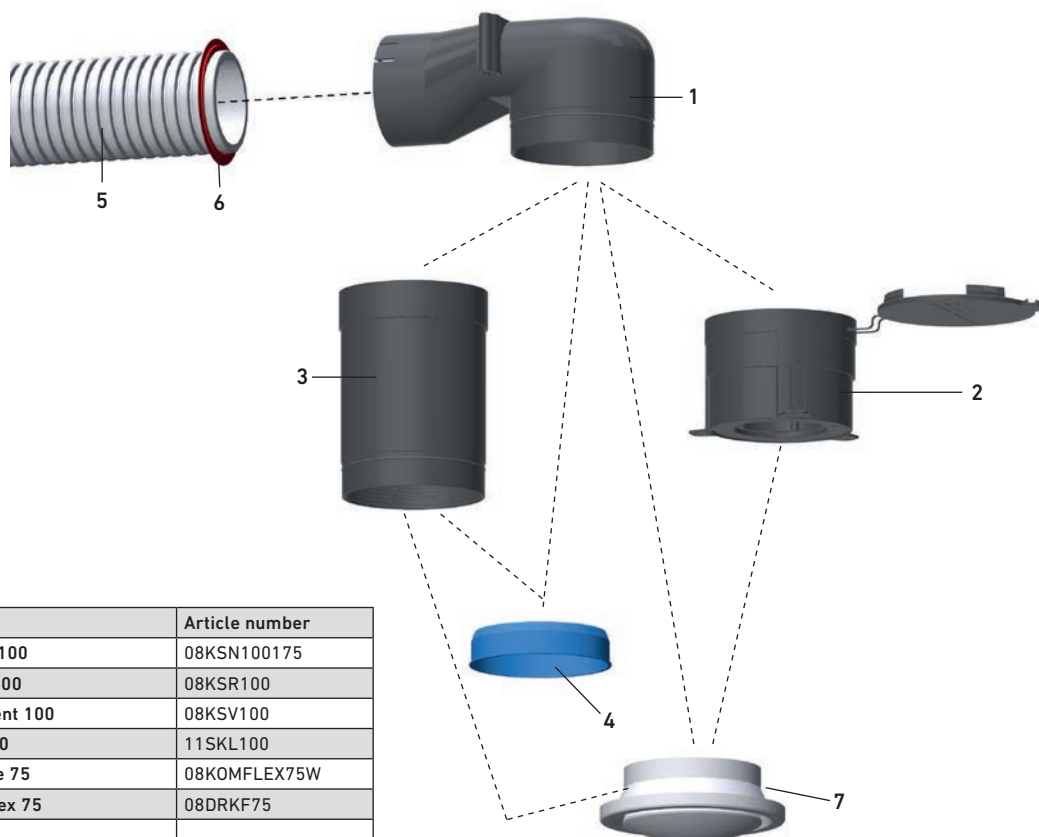
KS EXTENSION ELEMENT Ø 125



1 Internal connection: Ø 125 MF  
External connection: Ø 125 for 08KSV125  
2 Internal connection: Ø 125 for 08KSN1250V

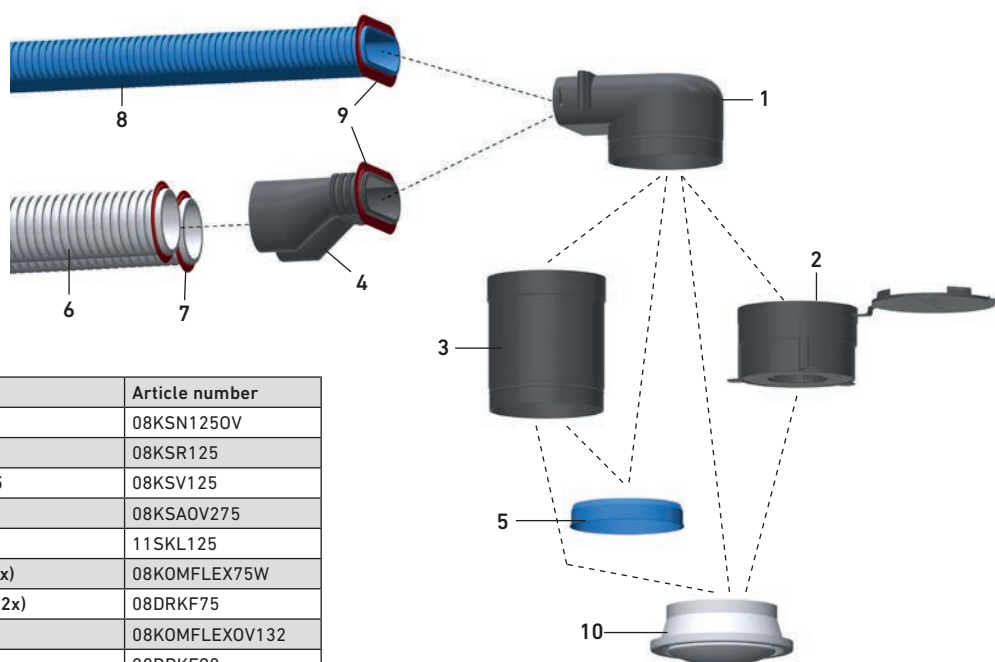


## System overview – Ø 100



| Item                       | Article number |
|----------------------------|----------------|
| 1 KS secondary vent 100    | 08KSN100175    |
| 2 KS formwork ring 100     | 08KSR100       |
| 3 KS extension element 100 | 08KSV100       |
| 4 Covering cap NS 100      | 11SKL100       |
| 5 KomFlex round pipe 75    | 08KOMFLEX75W   |
| 6 Sealing ring KomFlex 75  | 08DRKF75       |
| 7 Valves Ø 100             |                |

## System overview – Ø 125



| Item                           | Article number |
|--------------------------------|----------------|
| 1 KS secondary vent 125        | 08KSN1250V     |
| 2 KS formwork ring 125         | 08KSR125       |
| 3 KS extension element 125     | 08KSV125       |
| 4 KS adapter                   | 08KSAOV275     |
| 5 Covering cap NS 125          | 11SKL125       |
| 6 KomFlex round pipe 75 (2x)   | 08KOMFLEX75W   |
| 7 Sealing ring KomFlex 75 (2x) | 08DRKF75       |
| 8 KomFlex pipe oval            | 08KOMFLEXOV132 |
| 9 Sealing ring KomFlex 90      | 08DRKF90       |
| 10 Valves Ø 125                |                |

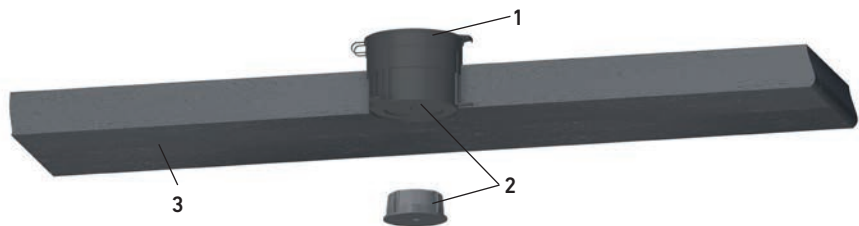


## Sample application – concrete ceiling

### STEPS TO THE FINISHED CONCRETE CEILING

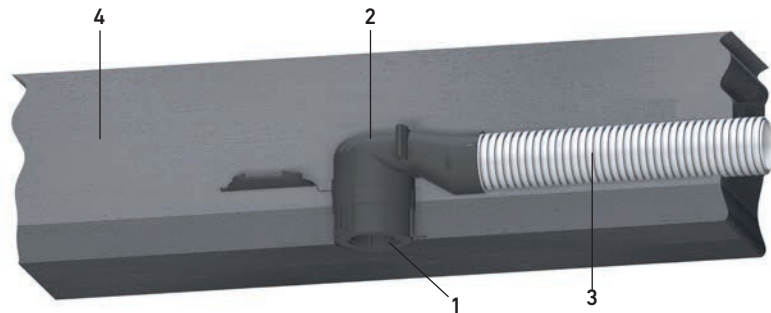
#### 1) ELEMENT CEILING, PREFABRICATED

- 1 KS formwork ring, closed
- 2 Tool magnet (KAISER)
- 3 Element ceiling



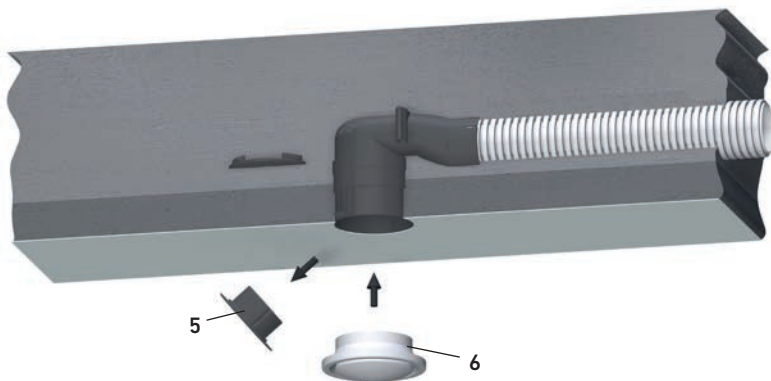
#### 2) IN-SITU CONCRETE

- 1 KS formwork ring, open
- 2 KS secondary vent
- 3 KomFlex round pipe 75  
(KomFlex-Rohr Oval not suitable for use in concrete)
- 4 In-situ concrete



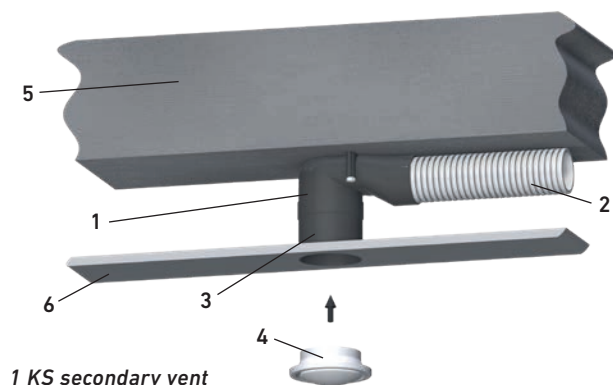
#### 3) VALVE ASSEMBLY

- 5 Broken out cover
- 6 Insertion of valve



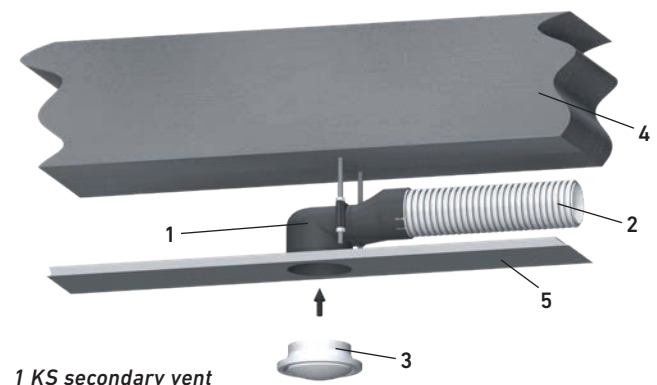
## Sample applications – suspended ceiling

#### 1) WITH EXTENSION ELEMENT



- 1 KS secondary vent
- 2 KomFlex pipe (round 75 or oval)
- 3 KS extension element (shortened)
- 4 Valve
- 5 Ceiling
- 6 Suspended ceiling

#### 2) WITHOUT EXTENSION ELEMENT

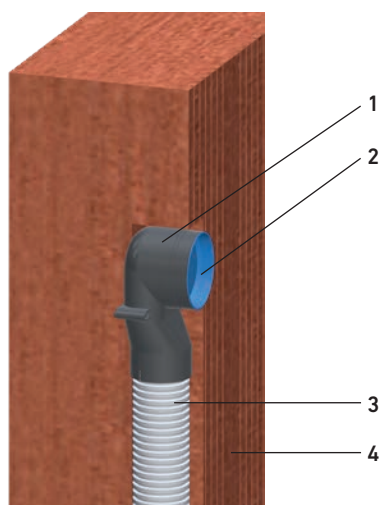


- 1 KS secondary vent
- 2 KomFlex pipe (round 75 or oval)
- 3 Valve
- 4 Ceiling
- 5 Suspended ceiling



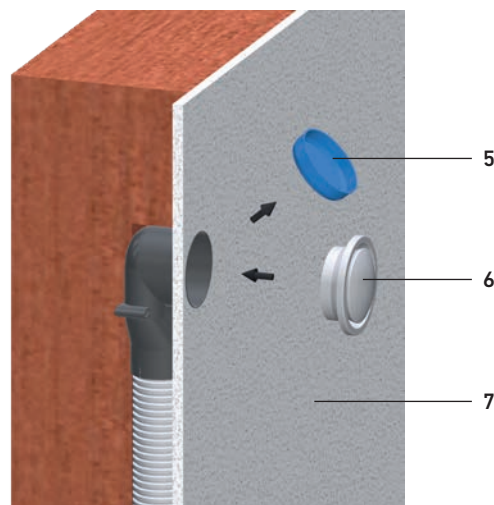
# Sample application – brick wall

## ROUGH-IN STAGE



- 1 KS secondary vent
- 2 Covering cap
- 3 KomFlex pipe  
(round 75 or oval)
- 4 Brick wall

## COMPLETION



- 5 Removal of covering cap
- 6 Insertion of valve
- 7 Plastering

Your partner/installer:



**klimaaktiv**  
Partner

**PASSIVHAUS**  
Austria

Mitglied  
**NETZWERK**  
**PASSIVHAUS**  
www.passivhaus.at

Responsible for the content: J. Pichler Gesellschaft m.b.H. | Graphics and layout: WERK1 Werbegraphik GmbH  
Photos: J. Pichler Gesellschaft m.b.H. | Text: J. Pichler Gesellschaft m.b.H.  
All rights reserved | All photos are symbolic photos | Subject to change without notice | Version: 05/2025 en/p

**PICHLER**  
Systematic ventilation.

**J. PICHLER**  
Gesellschaft m.b.H.

**AUSTRIA**  
9021 KLAGENFURT  
AM WÖRTHSEE  
Karlweg 5  
T +43 (0)463 32769

**1100 WIEN**  
Doerenkampgasse 5  
T +43 (0)1 6880988

office@pichlerluft.at  
www.pichlerluft.at

**PICHLER**  
Lüftungstechnik G.m.b.H

**GERMANY**  
86825 BAD WÖRISHOFEN  
Altwaterstraße 23  
office@pichlerluft.de  
www.pichlerluft.de

**PICHLER & CO d.o.o.**  
prezračevalni sistemi

**SLOVENIA**  
2000 MARIBOR  
Cesta k Tamu 26  
T +386 (0)2 46013-50  
pichler@pichler.si  
www.pichler.si

**KLIMA DOP d.o.o.**  
klimatizacija i ventilacija

**SERBIA**  
11070 NOVI BEOGRAD  
Autoput Beograd-Zagreb  
bb (Blok 52 – prostor GP  
„Novi Kolektiv“)  
T +381 (0)11 3190177  
office@klimadop.com  
www.klimadop.com